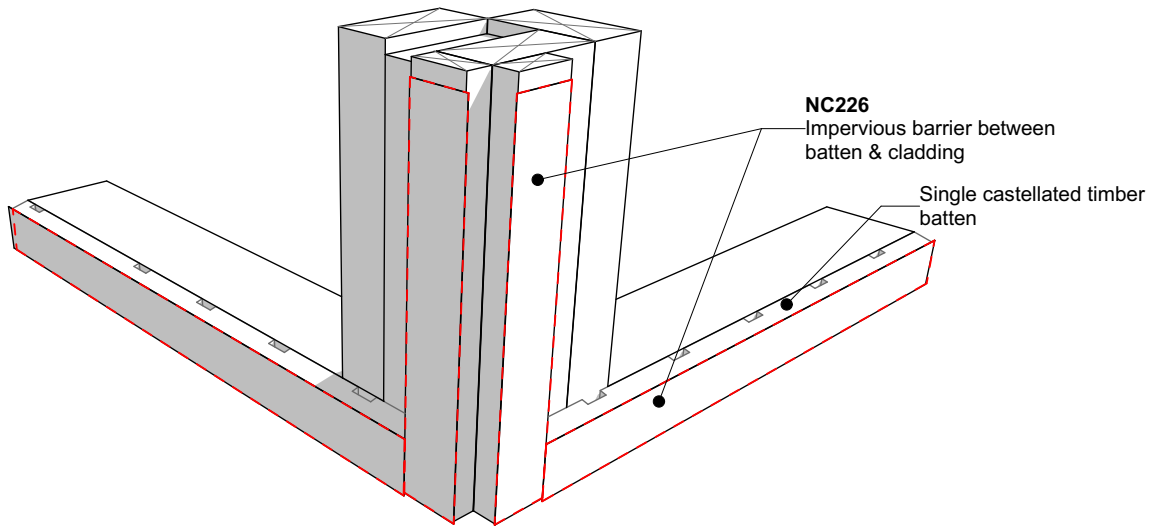


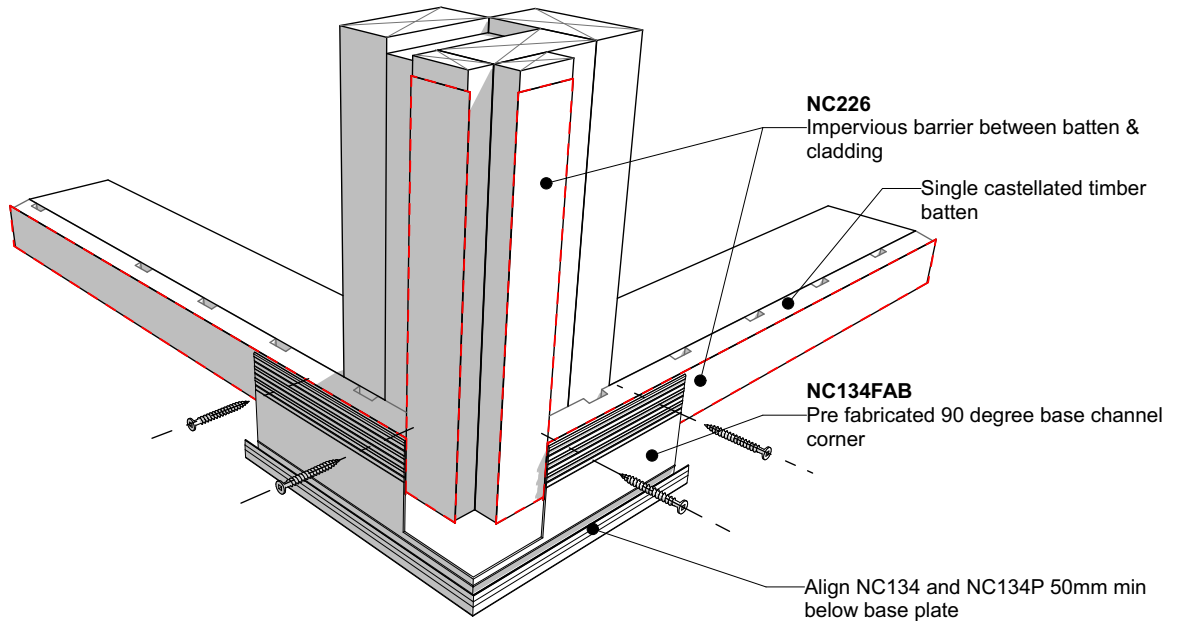
Step 1:



NC226
Impervious barrier between
batten & cladding

Single castellated timber
batten

Step 2:



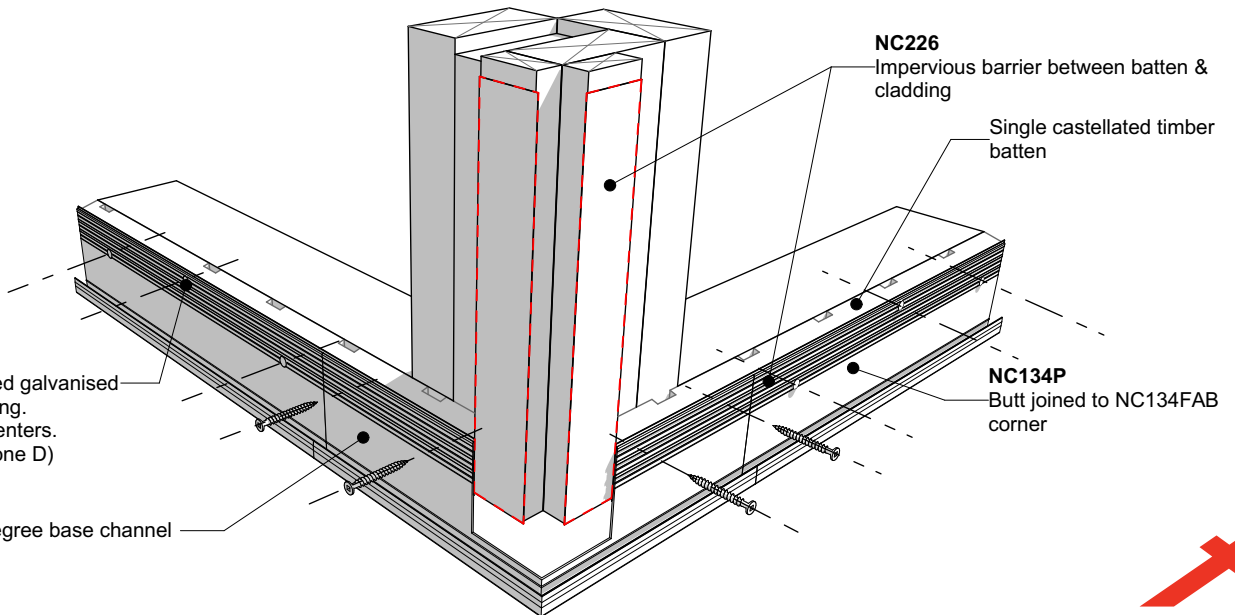
NC226
Impervious barrier between
cladding

Single castellated timber
batten

NC134FAB
Pre fabricated 90 degree base channel
corner

Align NC134 and NC134P 50mm min
below base plate

Step 3:



NC226
Impervious barrier between
cladding

Single castellated timber
batten

2.8x50mm hot dipped galvanised
clout nails into framing.
Staggered @ 300 centers.
(SS for Exposure Zone D)

NC134FAB
Pre fabricated 90 degree base channel
corner

NC134P
Butt joined to NC134FAB
corner



	<p>Nu-Wall cladding vertical on cavity</p> <p>Pre-Fabricated 90 deg base channel corner</p>	<p>NW-VOC-008.01</p>	
	<p>© 2021 copyright in this document is the property of Nu-Wall Aluminium Cladding Limited. All rights reserved. Nu-Wall is a registered trademark of Aluminium Product Brands NZ Limited</p>	<p>Drawn by: Nu-Wall</p> <p>Checked by: RL, GT</p>	<p>Date: 14/03/2022</p> <p>Scale: NTS</p>