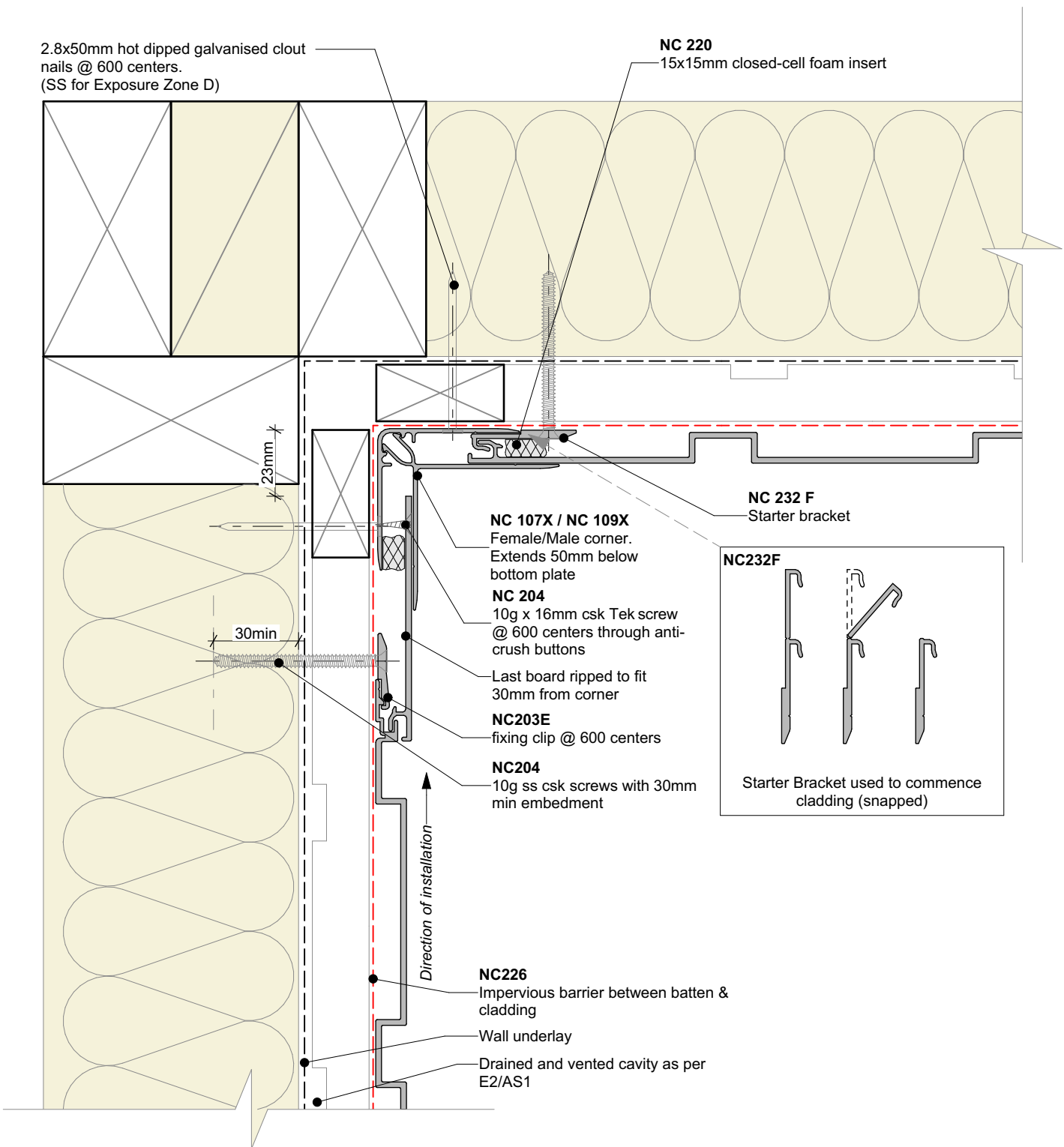
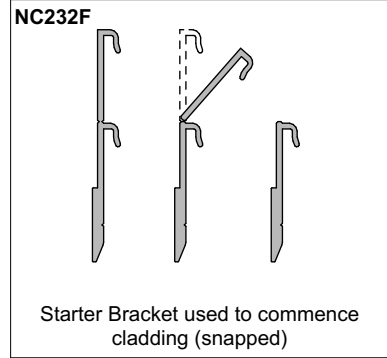


2.8x50mm hot dipped galvanised clout nails @ 600 centers.
(SS for Exposure Zone D)

NC 220
15x15mm closed-cell foam insert



NC 232 F
Starter bracket



Interactive assembly instructions available
<http://wksp.nz/nw-voc-intc>



Get WORKINGSPEC from Apple App Store/Google Play

Cavity batten note:

- 20mm single castellated timber battens required for all Nu-Wall installations.
- Batten to have 15° slope for moisture egress
- 18mm single castellated battens are available from Nu Wall for all vertical applications to wall junctions and jambs
- Proprietary Nu-Wall Alibat is available as an alternative when a structural non-combustable cavity batten is required



Nu-Wall cladding vertical on cavity
Internal 90 deg. corner using NC107X and NC109X

NW-VOC-013.01

Drawn by: Nu-Wall	Date: 14/03/2022
Checked by: RL, GT	Scale: 1:2 @ A4

© 2021 copyright in this document is the property of Nu-Wall Aluminium Cladding Limited. All rights reserved. Nu-Wall is a registered trademark of Aluminium Product Brands NZ Limited