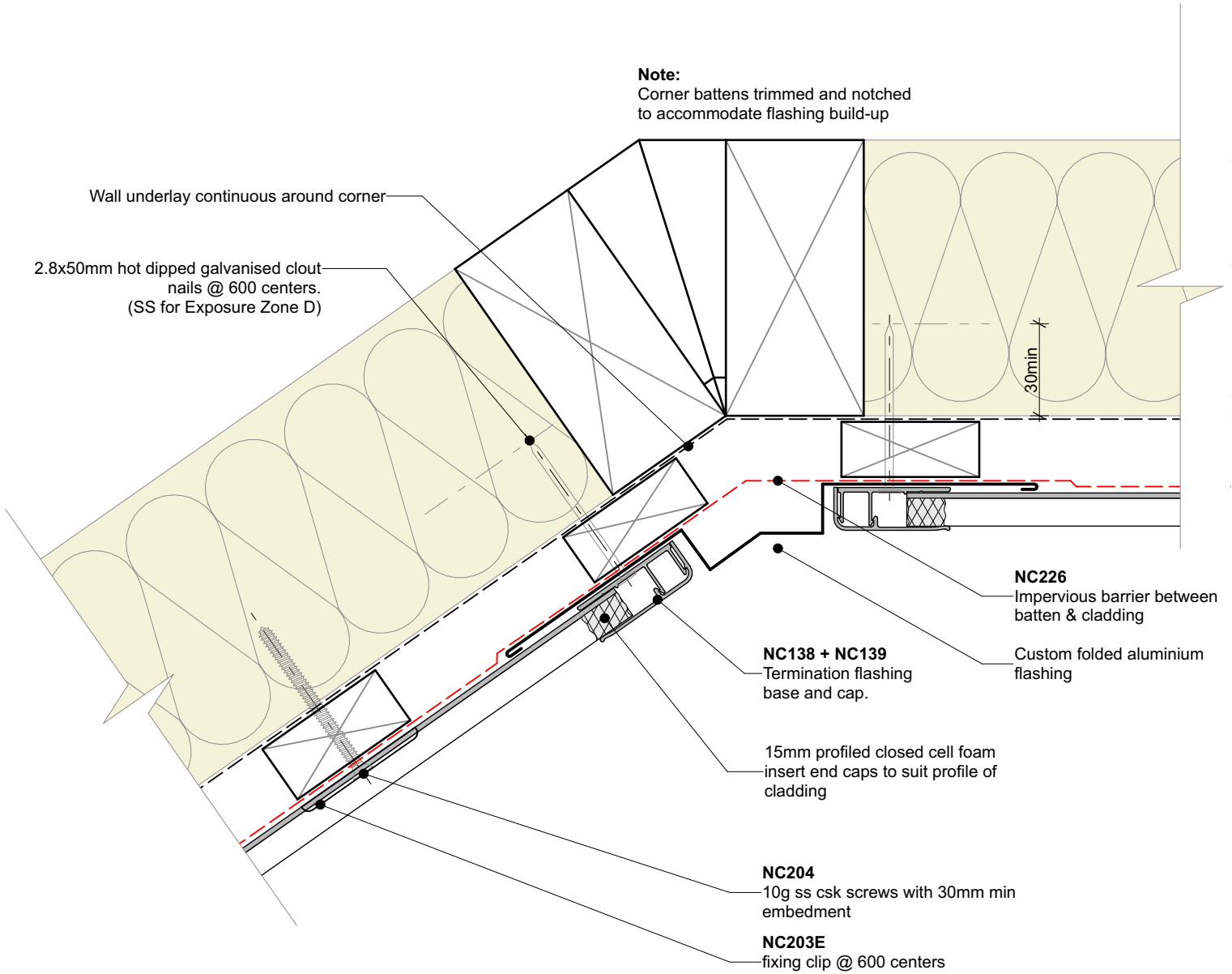


Custom folded 1.2mm thick aluminium flashing.  
Powder coated to match cladding.

**Note:**  
Corner battens trimmed and notched to accommodate flashing build-up




**General note:**

- Cladding fixings omitted for clarity
- When finishing a wall with a ripped board, the board must be direct fixed with a counter sunk screw @ 600mm centres

**Cavity batten note:**

- 20mm timber battens required for all Nu-Wall horizontal board installations
- Batten to have 15° slope for moisture egress
- Battens to all internal, external corners, jambs, and sills to be sized to 18mm to accommodate flashing build up
- 20 and 18mm single castellated battens are available directly from Nu Wall
- Proprietary Nu-Wall AliBat is available as an alternative when a structural non-combustible batten is required



	<p>Nu-Wall cladding horizontal on cavity Typical Nu-Wall irregular internal corner flashing</p>		<p>NW-HOC-040.02</p>	
	<p>© 2021 copyright in this document is the property of Nu-Wall Aluminium Cladding Limited. All rights reserved. Nu-Wall is a registered trademark of Aluminium Product Brands NZ Limited</p>	<p>Drawn by: Nu-Wall</p>	<p>Date: 20/9/22</p>	<p>Checked by: RL, GT</p>