

**Cavity batten note:**

- Single castellated battens to be used in all cases
- 20mm timber battens required for all Nu-Wall horizontal board installations
- Battens to have 15° slope for moisture egress
- Battens to all internal, external corners, jambs, and sills to be sized to 18mm to accommodate flashing build up
- 20 and 18mm single castellated battens are available directly from Nu Wall
- Proprietary Nu-Wall AliBat is available as an alternative when a structural non-combustible batten is required



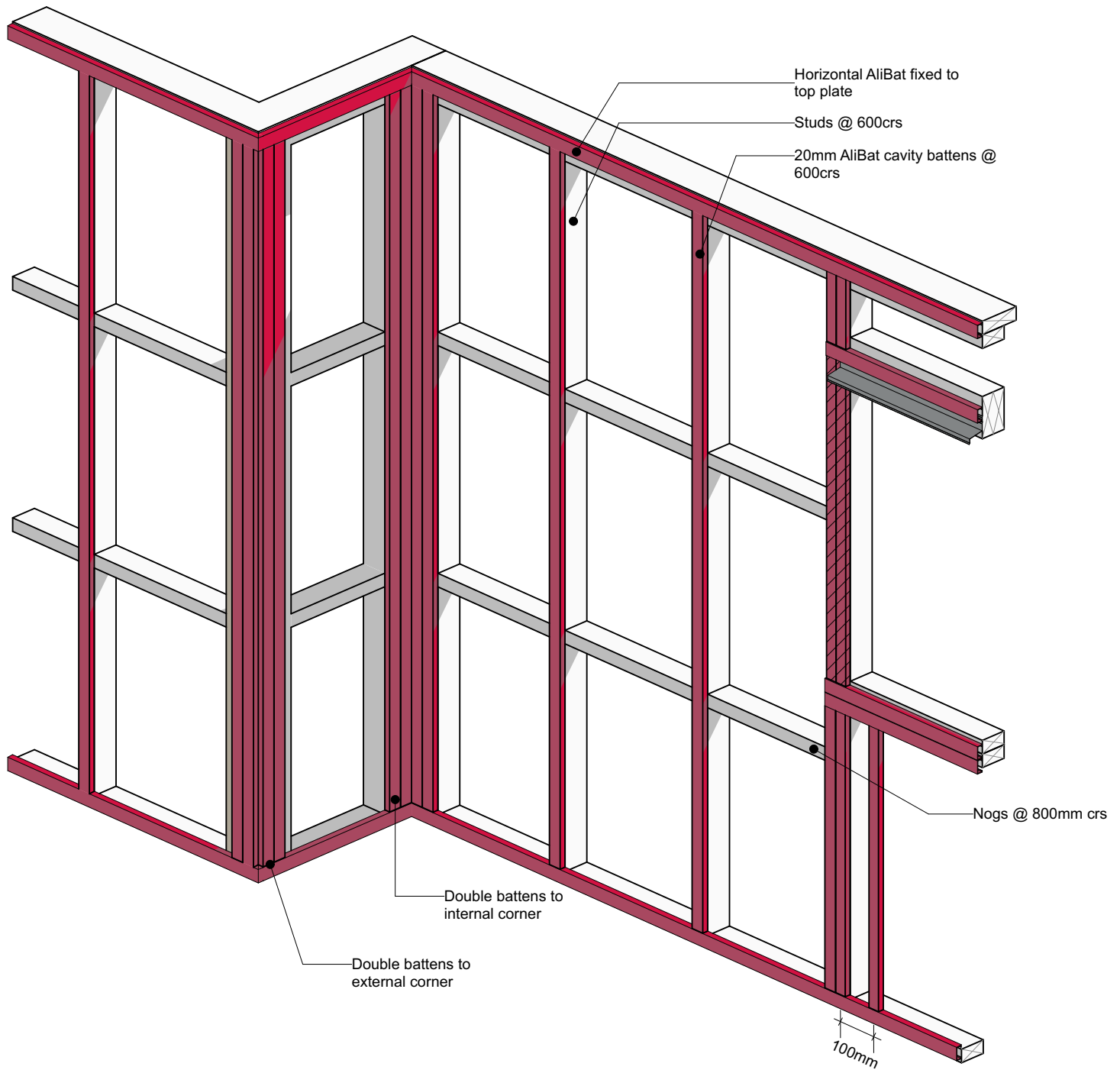
Nu-Wall cladding batten layout  
Vertical Batten Layout (H3 timber battens)

NW-HOC-TIM BATT 01.01

Drawn by: Nu-Wall      Date: 28/2/23

Checked by: RL, GT      Scale: NTS

© 2021 copyright in this document is the property of Nu-Wall Aluminium Cladding Limited. All rights reserved. Nu-Wall is a registered trademark of Aluminium Product Brands NZ Limited



**Note:**

- Nogs are not required for Nu-Wall horizontal board installations when using AliBat

**Cavity batten note:**

- 20mm timber battens required for all Nu-Wall horizontal board installations
- Batten to have 15° slope for moisture egress
- Battens to all internal, external corners, jambs, and sills to be sized to 18mm to accommodate flashing build up
- 20 and 18mm single castellated battens are available directly from Nu Wall
- Proprietary Nu-Wall AliBat is available as an alternative when a structural non-combustible batten is required



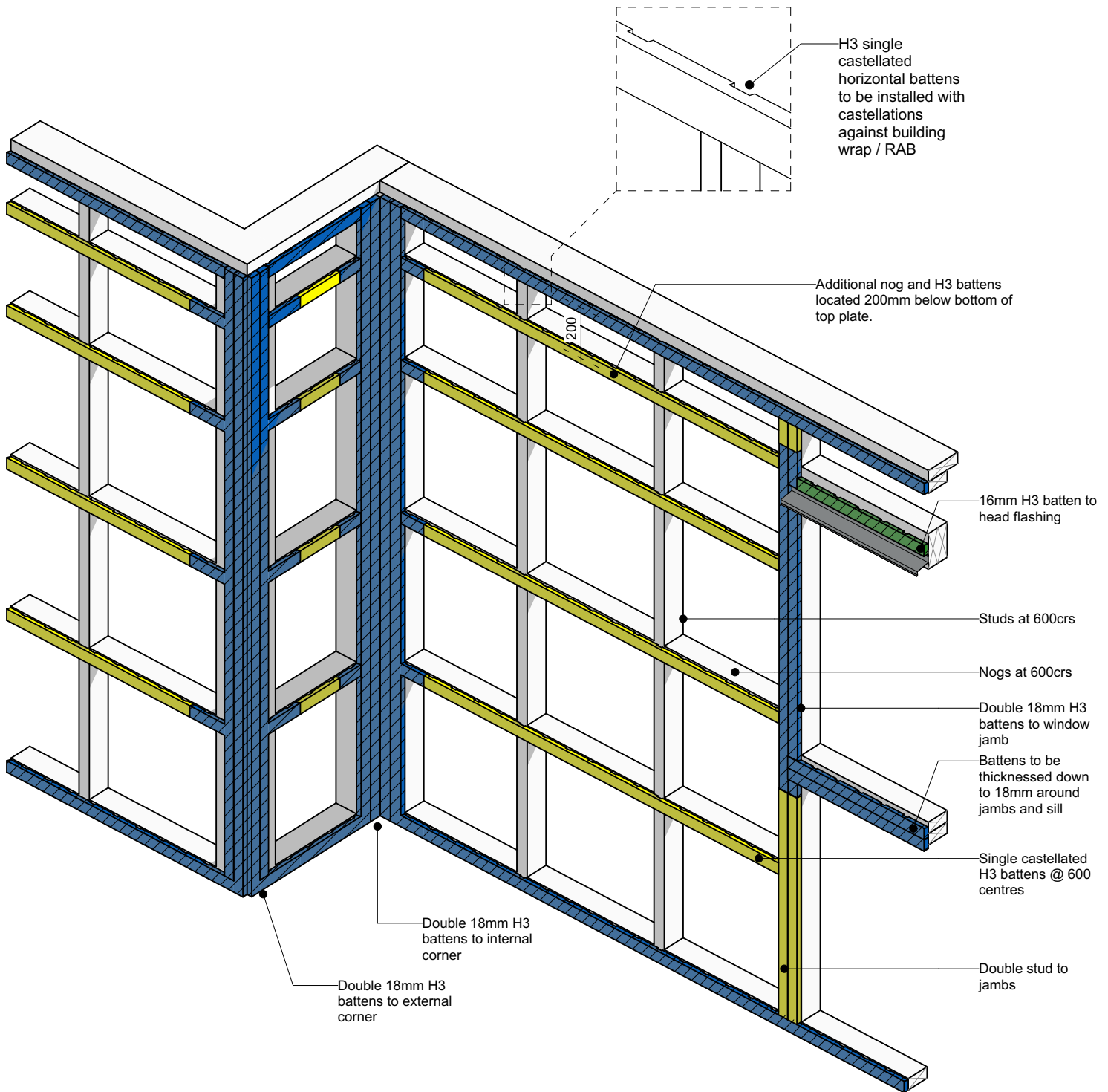
Nu-Wall cladding batten layout  
 Vertical Batten Layout (AliBat structural batten)

© 2021 copyright in this document is the property of Nu-Wall Aluminium Cladding Limited. All rights reserved. Nu-Wall is a registered trademark of Aluminium Product Brands NZ Limited

NW-HOC-ALIBAT 02.01

Drawn by: Nu-Wall      Date: 28/2/23

Checked by: RL, GT      Scale: NTS



**Cavity batten note:**

- Single castellated battens to be used in all cases
- 20mm timber battens required for all Nu-Wall horizontal board installations
- Batten to have 15° slope for moisture egress
- Battens to all internal, external corners, jambs, and sills to be sized to 18mm to accommodate flashing build up
- 20 and 18mm single castellated battens are available directly from Nu Wall
- Proprietary Nu-Wall AliBat is available as an alternative when a structural non-combustible batten is required



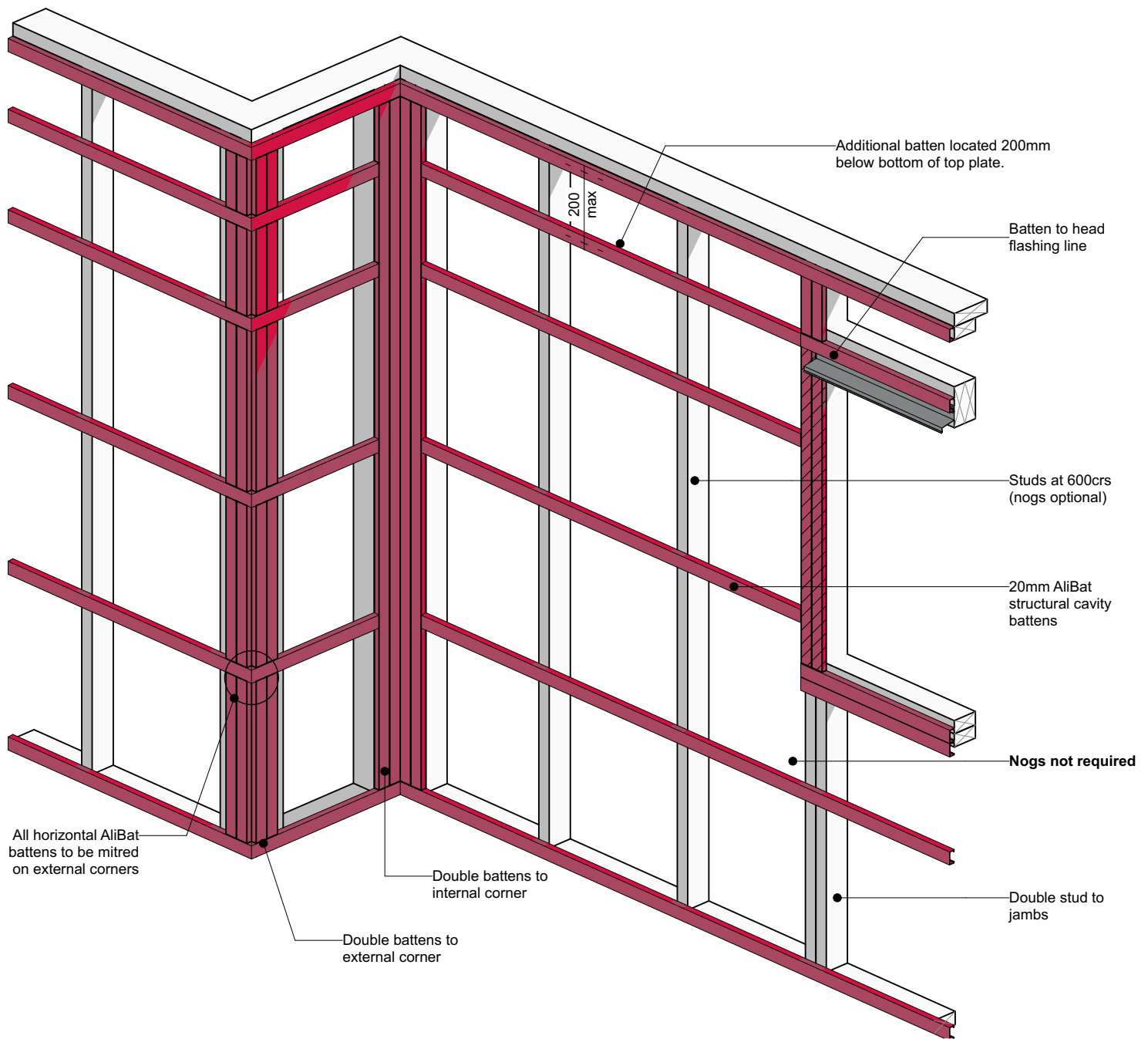
Nu-Wall cladding batten layout  
Horizontal Batten Layout (H3 timber battens)

NW-VOC-TIM BATT 01.01

Drawn by: Nu-Wall      Date: 28/2/23

Checked by: RL, GT      Scale: NTS

© 2021 copyright in this document is the property of Nu-Wall Aluminium Cladding Limited. All rights reserved. Nu-Wall is a registered trademark of Aluminium Product Brands NZ Limited



**Note:**

- Nogs are not required for Nu-Wall horizontal board installations when using AliBat

**Cavity batten note:**

- 20mm timber battens required for all Nu-Wall horizontal board installations
- Batten to have 15° slope for moisture egress
- Battens to all internal, external corners, jambs, and sills to be sized to 18mm to accommodate flashing build up
- 20 and 18mm single castellated battens are available directly from Nu Wall
- Proprietary Nu-Wall AliBat is available as an alternative when a structural non-combustible batten is required



Nu-Wall cladding batten layout

Horizontal Batten Layout (AliBat structural batten)

© 2021 copyright in this document is the property of Nu-Wall Aluminium Cladding Limited. All rights reserved. Nu-Wall is a registered trademark of Aluminium Product Brands NZ Limited

NW-VOC-ALIBAT 02.01

Drawn by: Nu-Wall Date: 28/2/23

Checked by: RL, GT Scale: NTS