

**NC204**

10g ss csk screws with 30mm min embedment

**NC203E**

Fixing bracket @ 600mm centers

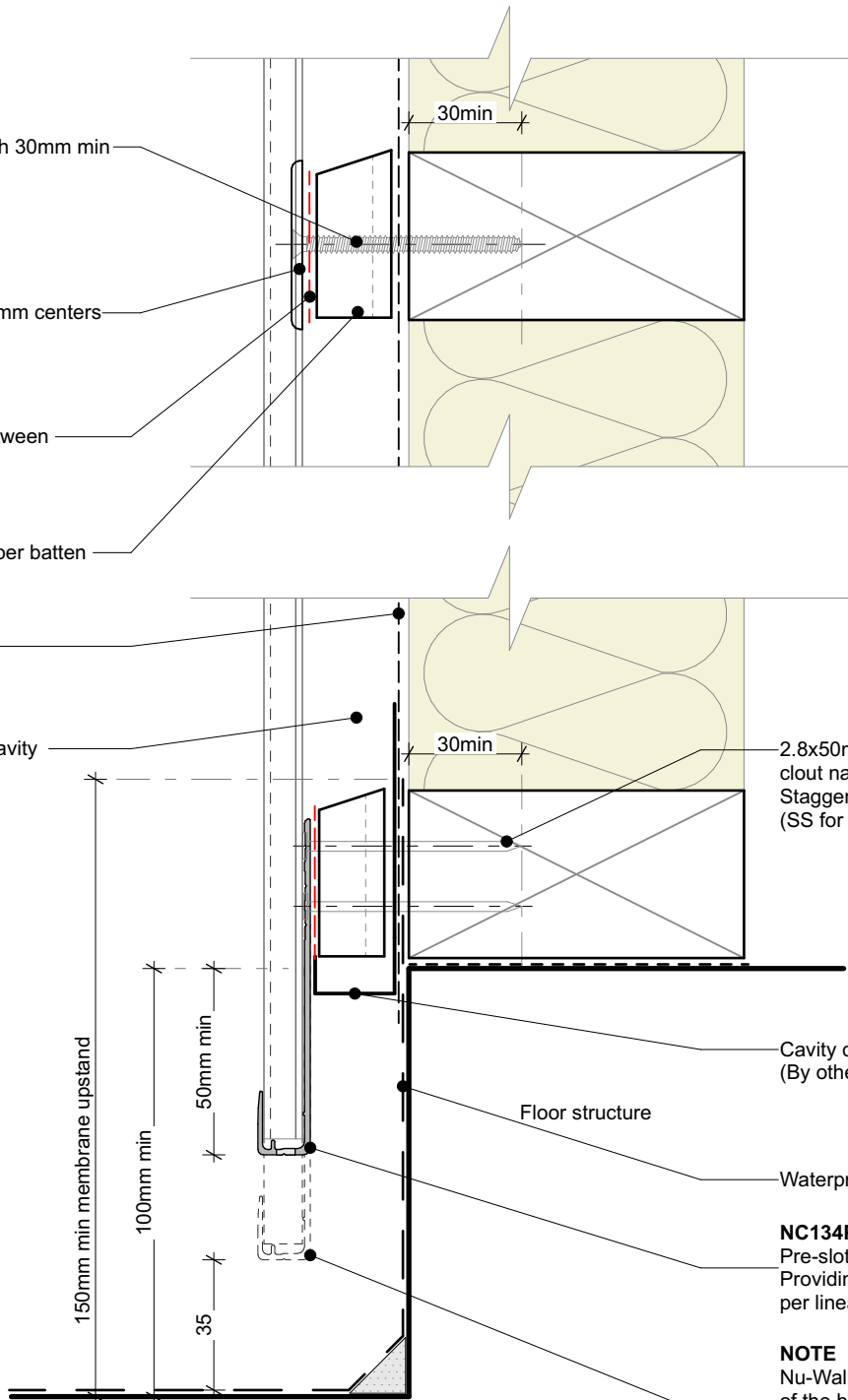
**NC226**

Impervious barrier between batten & cladding

Single castellated timber batten  
\*See note

Wall underlay

Drained and vented cavity as per E2/AS1



2.8x50mm hot dipped galvanised clout nails in to framing. Staggered @ 300centers. (SS for Exposure Zone D)

Cavity closer as per E2/AS1 (By others)

Floor structure

Waterproof deck membrane

**NC134P**

Pre-slotted base channel. Providing 2000mm<sup>2</sup> of ventilation per linear meter

**NOTE**

Nu-Wall supports the extension of the base channel down to 35mm of any hard surface. Timber cavity battens to comply with NZS 3604 requirements.

Waterproof deck structure. Ensure that design and waterproofing complies with NZBC E2/AS1

**Cavity batten note:**

- 20mm single castellated timber battens required for all Nu-Wall installations.
- Batten to have 15° slope for moisture egress
- 18mm single castellated battens are available from Nu Wall for all vertical applications to wall junctions and jambs
- Proprietary Nu-Wall Alibat is available as an alternative when a structural non-combustable cavity batten is required



Nu-Wall cladding vertical on cavity  
Typical base channel over waterproof deck

NW-VOC-007.02

Drawn by: Nu-Wall Date: 19/9/2024

Checked by: RL, GT Scale: 1:2 @ A4

© 2021 copyright in this document is the property of Nu-Wall Aluminium Cladding Limited. All rights reserved. Nu-Wall is a registered trademark of Aluminium Product Brands NZ Limited