

Allow 6mm gap between vertical and horizontal battens

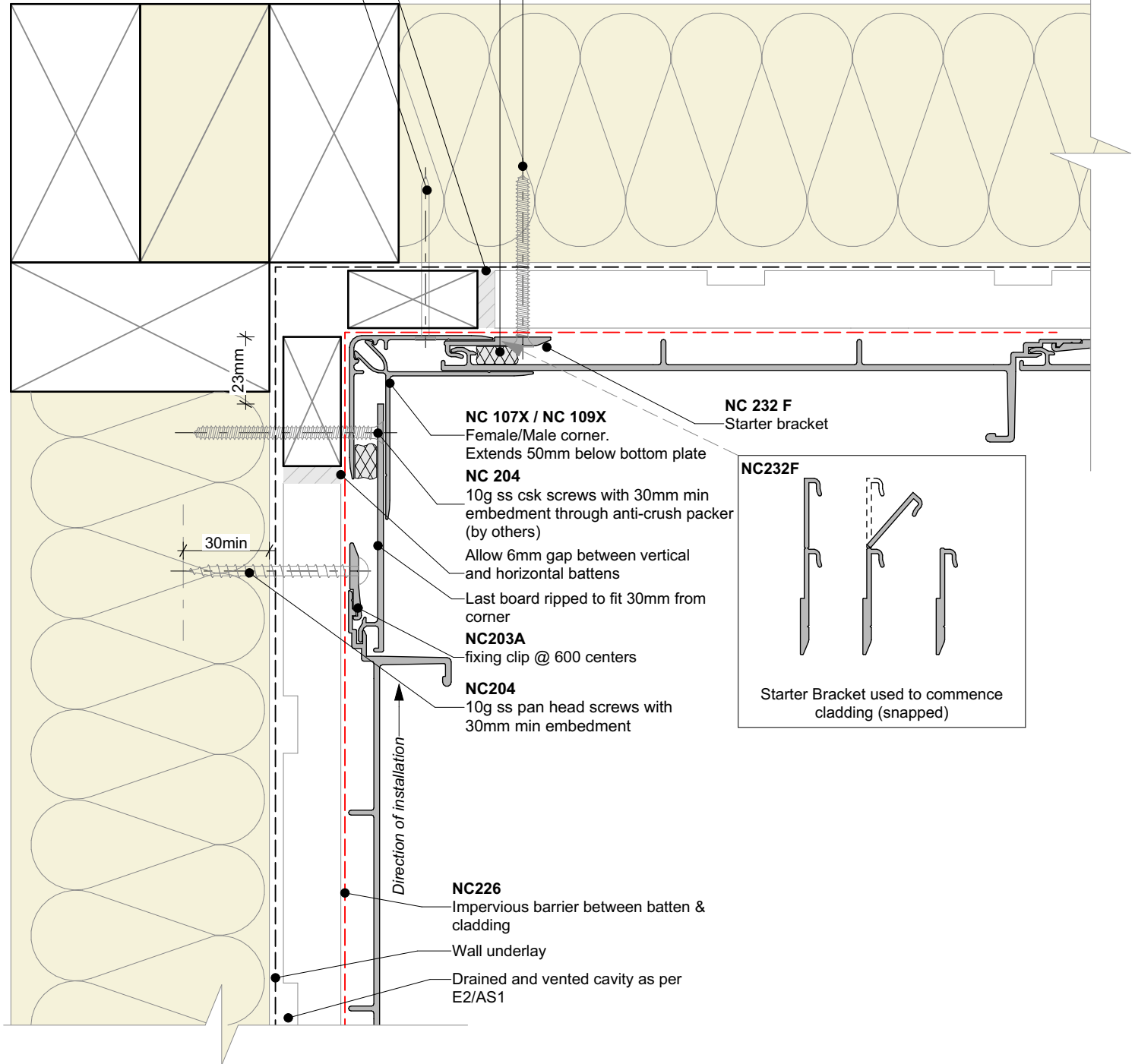
2.8x50mm hot dipped galvanised clout nails @ 600 centers.  
(SS for Exposure Zone D)

**NC 220**

15x15mm closed-cell foam insert

**NC 204**

10g ss csk screws with 30mm min embedment



**NC 107X / NC 109X**

Female/Male corner.  
Extends 50mm below bottom plate

**NC 204**

10g ss csk screws with 30mm min embedment through anti-crush packer (by others)

Allow 6mm gap between vertical and horizontal battens

Last board ripped to fit 30mm from corner

**NC203A**

fixing clip @ 600 centers

**NC204**

10g ss pan head screws with 30mm min embedment

**NC 232 F**

Starter bracket

**NC232F**

Starter Bracket used to commence cladding (snapped)

Direction of installation

**NC226**

Impervious barrier between batten & cladding

Wall underlay

Drained and vented cavity as per E2/AS1

#### Cavity batten note:

- 20mm single castellated timber battens required for all Nu-Wall installations.
- Batten to have 15° slope for moisture egress
- Allow 6mm gap between vertical and horizontal battens
- Sill and head battens to be max. 500mm with a 6mm gap to each segment
- 18mm single castellated battens are available from Nu Wall for all vertical applications to wall junctions and jambs
- Proprietary Nu-Wall Alibat is available as an alternative when a structural non-combustable cavity batten is required



**nu-wall**  
CLADDING

Nu-Wall cladding SS200 vertical on cavity

Internal 90 deg. corner using NC107X and NC109X

NW-SS200-016.01

Drawn by: Nu-Wall

Date: 02/07/2025

Checked by: RL, GT

Scale: 1:2 @ A4

© 2021 copyright in this document is the property of Nu-Wall Aluminium Cladding Limited. All rights reserved. Nu-Wall is a registered trademark of Aluminium Product Brands NZ Limited